

Candidate's Index Number \_\_\_\_\_

Name of the School \_\_\_\_\_

**KEYS EDUCATIONAL AND STATIONERY SERVICES (KESS)**  
**REGISTRATION NUMBER: 473801**



E- mail [keyseducational-services@gmail.com](mailto:keyseducational-services@gmail.com)

Phone No: 0758587618/0679587618

KIFURU-KINYEREZI, DAR ES SALAAM

**FIRST STANDARD SEVEN JOINT ASSESSMENT**  
**05E: SCIENCE AND TECHNOLOGY**

**Time: 1:30 Hour**

**Friday 8<sup>th</sup> March, 2024**

**Instructions**

1. This paper consists of sections **A, B** and **C** with a total of **eight (8)** questions.
2. Answer **all** questions in each section.
3. Write your answers in the space provided in each question.
4. All answers must be written in **blue** or **black** pen.
5. Cellular phones, and any unauthorized materials are **not** allowed in the assessment room.
6. Write your **Index Number and Name of your School** in the space provided at the top right corner of every page.

**FOR EXAMINERS' USE ONLY**

| QUESTION NUMBER           | SCORE | EXAMINER'S INITIALS |
|---------------------------|-------|---------------------|
| 1.                        |       |                     |
| 2.                        |       |                     |
| 3.                        |       |                     |
| 4.                        |       |                     |
| 5.                        |       |                     |
| 6.                        |       |                     |
| 7.                        |       |                     |
| 8.                        |       |                     |
| <b>TOTAL</b>              |       |                     |
| <b>ENTERER'S INITIALS</b> |       |                     |
| <b>CHECKER'S INITIALS</b> |       |                     |





Candidate's Index Number \_\_\_\_\_  
Name of the School \_\_\_\_\_

2. Match the explanations in **Column A** with the correct tabs of excel program in **Column B** by writing the letter of the correct answer in the brackets provided

| Column A  | Letters | Column B       |
|---|---------|----------------|
| i. It is used to perform common commands such as bold, underline, copy, and paste.  | [ ]     | A. File tab    |
| ii. It allows the user to insert tables, illustrations, apps, charts, reports, spark lines, filters, links, texts and symbols                 | [ ]     | B. Home tab    |
| iii. It provides tools for formatting a page.   | [ ]     | C. Review      |
| iv. It enables the user to make proofing on the worksheet, change language, add comments and changes such as protect sheet and track changes. | [ ]     | D. View        |
| v. It displays groups of commands that provide an opportunity to view data or worksheet in workbook view, display, zoom, window and macros.   | [ ]     | E. Page Layout |
|   |         | F. Data tab    |
|   |         | G. Insert tab  |

3. Choose the correct answer from the box provided and write it in the blank spaces

**Tuberculosis, Cancer, Gonorrhoea, Syphilis, Trichomoniasis, Diabetes, Measles**

- i. A sexually transmitted disease which is caused by bacteria called Neisseria is known as \_\_\_\_\_
- ii. A sexually transmitted disease caused by bacteria called Treponema is known as \_\_\_\_\_
- iii. An airborne infectious disease caused by bacteria which usually affects the lungs is called \_\_\_\_\_
- iv. A disease that occurs when normal blood sugar levels are not maintained in the body is known as \_\_\_\_\_
- v. Which disease affects human cells?  
\_\_\_\_\_

### SECTION B (20 Marks)

Answer **all** questions in this section

4. Answer the following questions by writing the correct answers in the spaces provided

- i. Which blood cells protect the body against disease causing organisms?  
\_\_\_\_\_
- ii. The blood vessels which transport oxygenated blood from the heart to other parts of the body except the pulmonary artery are called \_\_\_\_\_
- iii. The blood vessels which transport deoxygenated blood from different parts of the body to the heart except the pulmonary vein are known as \_\_\_\_\_

5. Answer the following questions by writing the correct answers in the spaces provided

- i. Briefly explain why a ship floats on water while a needle sinks in water  
\_\_\_\_\_
- ii. What is the standard unit of density?  
\_\_\_\_\_
- iii. If the density of an object is less than that of water, what will happen if you drop the object into water?  
\_\_\_\_\_



Candidate's Index Number \_\_\_\_\_  
Name of the School \_\_\_\_\_

**6. Write the correct answers in the spaces provided**

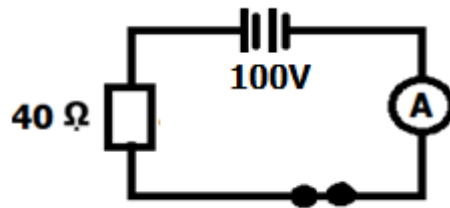
- i. Differentiate between a simple machine and a complex machine  
\_\_\_\_\_  
\_\_\_\_\_
- ii. Why is the mortise lock grouped as a complex machine?  
\_\_\_\_\_
- iii. Akwilina was sweeping a classroom by using a broom. To which class of lever does a broom belong?  
\_\_\_\_\_
- iv. During the wedding of Mr. and Mrs. Choboliko, women were splitting logs to get firewood for cooking food. Which simple machines were used by the women?  
\_\_\_\_\_

**SECTION C (10 Marks)**

Answer **all** questions in this section

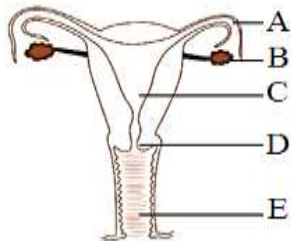
**7. Answer the following questions by writing the correct answers in the spaces provided**

- i. A standard six pupil connected the electric circuit as shown by the diagram below. Determine the amount of electric current flowing in the circuit



- ii. The potential difference across the two ends of a wire is 12 volts. The amount of current passing through the wire is 0.4 amperes. What is the resistance of the wire?  
\_\_\_\_\_  
\_\_\_\_\_
- iii. Mvunda pushed a barrel through a distance of 6 metres using 10 newtons. How much work was done by the Mvunda?  
\_\_\_\_\_  
\_\_\_\_\_

**8. Observe the diagram below then answer the questions that follow:**



- i. Name the part labeled B  
\_\_\_\_\_
- ii. Briefly explain the function performed by the part marked C  
\_\_\_\_\_